IN THIS
ISSUE

1

RETURNING TO
CAMPUS

2

HOUSE
CORPORATION
OFFICERS
& REPORT

3

ALUMNI UPDATES
& CHAPTER
CELESTIAL

4-5

PHOTOS
FROM THE
PAST & PRESENT

6

CAMPUS PARTNERS
PROGRAM &
FUTURE
CHAPTER &
INDIVIDUAL GOALS

7

PROFILE OF THE
STUDENT WE ARE
LOOKING FOR
&
HOW YOU CAN
SUPPORT
BETA XI

8

KEEP IN TOUCH
WITH BETA XIBeta-Xi Will Return to Campus
If We Want To Have a Chapter

It's time for Beta-Xi to be back at CAL. However, before we return in 2022 or 2023, we want to develop a plan that will lead to a long-term successful chapter, and that will involve alumni who want to make a difference! We'd like to ask you all to consider these statements: "Were you in the Beta-Xi Chapter of Kappa Sigma or is the Beta-Xi Chapter of Kappa Sigma in you? Were you just passing through the doors when you were an undergraduate or do you consider Beta-Xi a lifetime commitment? Did you develop some leadership, organizational and social skills while you were a member? Did you meet your future spouse through the chapter? Have you been able to network in your career with other Brothers? Do you still have Beta-Xi Brothers amongst your closest friends?"

We ask all of the above because we want each alumnus to consider volunteering in some way for Beta-Xi.



How do we succeed in the long-run? We focus on this vision and the plan below: Beta-Xi's vision is to provide our members with a great college experience; to ensure they are career-ready; to start a lifetime of friendships; and help them have successful lives.

- We will be a values-driven organization.
- We will be innovative and not afraid to lead.
- We will adapt as it makes sense and will collaborate with the campus & community stakeholders.
- We will focus on creating a fun and healthy environment.
- We will provide a quality living-learning environment.
- We will recruit those focused on academics, campus & chapter involvement, career-readiness, diversity & inclusion, leadership development, service & respect for differences, as well as those with a competitive spirit.

Our Plan (and we hope you are part of it)

1. We will develop our branding/marketing for our communications and facility tied to our vision. If you have experience in this area, can you help us?
2. We will be committed to innovation and remain relevant to our alumni, parents and undergraduates. Would you be willing to join a committee to discuss this?
3. We will have written programs, bylaws, educational programs, and goals that are evaluated. Our advisors will guide this area.
4. We will identify alumni to serve on a recruitment panel to interview our potential new members each year. Would you be willing to give up a day in the fall and/or spring to help ensure we recruit the right members?
5. We will recruit committed volunteers with a succession plan for our Advisory Board and House Corporation Board. With Zoom you can support the chapter from anywhere. Are you willing to serve as one of our volunteers?
6. We will engage with purpose with our campus partners and Kappa Sigma headquarters staff and volunteers. Would you be willing to help us have those conversations?
7. We will develop a career network with career resources, job board, mentoring platform, and speaker series. Would you be willing to present a one-hour presentation and/or provide career advice to an undergraduate or other alumnus?
8. We will have professional staff for accounting, alumni & parent relations, house director, health & wellness, kitchen management and property management. Do you have any recommendations?
9. We will choose chapter officers and key committee chairs through a slating process. Are you interested in serving on the panel?
10. We will ensure that undergraduates and alumni are committed to accountability and risk management. We will also have a membership review annually to ensure we maintain a high level of excellence. Are you willing to help us develop the plan in this area?



2020 2021

KEY OFFICERS & VOLUNTEERS

HOUSE CORPORATION

Ronald H. Kahn '57 – President
Jay Cahan '85 – Vice President
Aaron Lowe '09 – Vice President
Curtis Tongue '03 –
 Vice President
Taz Patel '01 – Treasurer
Peter Weiss '09 – Secretary
Whitney Skala '76 – Chairman,
 Long Range Planning Committee

If you are willing to join the House
 Corporation Board, please email
 Whitney Skala at
whitney@skala-apc.com.

SAVE THE DATE

**Homecoming
 Weekend '21**

October 1-3, 2021

**Big Game
 Cal at Stanford**

November 20, 2021

Watch your email and mail for more
 details this summer and early fall.

HOUSE | State of the House CORPORATION | Report

Ronald Kahn '57

Covid-19 has had serious repercussions regarding many aspects of 2400 Warring Street. Obviously, the pandemic has curtailed a suspension of any attempt to reinstate a Kappa Sigma charter and, with the assistance of the National, to recolonize and develop a pledge class to occupy the premises. In addition, the Berkeley City Council has passed an ordinance enabling all students who are duly registered at an institution of higher learning to terminate their status as a tenant in any Berkeley housing accommodation given non-on campus instruction. Pursuant to State of California law and the Berkeley ordinance, the ability to demand and seek court assistance in compelling rent under a rent agreement remains in full force and effect. Collection of such funds may be problematical notwithstanding each tenant lease has guarantors.

At present, the occupancy of the House is essentially 50%. A few tenants have or are electing to terminate given the Berkeley ordinance. Accordingly, we are experiencing a deficit in the operation of the House. Our reserves are currently sufficient to continue operation as a rooming house and hopefully continue until a vaccine is in place. Accordingly, we are in a wait and see posture.

The House remains in good condition thanks to the services of our property managers, S&T Fraternity

Management. We do recognize the need for a few capital improvements in the future. Whitney Skala '76, a former GM, is the chair of our alumni outreach committee and he and Matt Noble '84 (Gamma-Rho), President of Fraternity Management Group, are assisting in creating an outreach program that will benefit all of us. Your participation would be welcome and essential.

AEKDB,
 Ron Kahn
 President, Beta Xi, Inc.



More about Ron

Ron Kahn, a political Science major at Cal, was initiated in 1957 as a proud member of Kappa Sigma Fraternity. He graduated in 1959 and went on to law school and has practiced law for over 50 years. He is currently the President of Beta Xi, Inc., (Housing Corp.) the owner of the former chapter house of Kappa Sigma Fraternity. While a member of Kappa Sigma, he actively participated in numerous activities and was Rush Chairman for one of the largest pledge classes ever established. Regretfully, the fraternity's charter was suspended and the chapter is inactive at this time. Both Beta Xi, Inc. and the national are working toward a recolonization and are hopeful to reestablish the chapter. Covid 19 has presented a logistical obstacle.

During the 70's through the 90's Brother Kahn served as counsel and board member for the Beta Xi Housing Corporation and worked closely with the chapter actives through these tumultuous years. The process of recharter has fostered a bold plan given the influence of Cal's prominence as a coveted public university. The new pledges and actives will necessarily look beyond their fraternal experience as a social venue, but as an opportunity to engage in community service, faculty outreach and participation with alumni. The goal is to facilitate not only a well-rounded student, but equally important, a well-rounded citizen. These will be exciting times and our alums need to step up.

*Beta-Xi,
 continued
 from front
 page*

11. We will ensure our facility represents our brand and meets the needs of our members. Would you be willing to help us develop a plan for our facility?
12. We will have the funding to award 10-15 \$1,500-\$2,000 scholarships to incoming freshmen to help with our recruitment as well as 5-10 \$2,500 scholarships to recognize our members for excellence in academics and leadership. Would you be willing to make a contribution and/or help us develop a plan to raise these funds?

If you are willing to make a difference in any of these areas, please contact Whitney Skala at whitney@skala-apc.com or 619-985-8853 or Matt Noble at matt.noble@fmgtucson.com or 520-990-3250. Also, if you know a student coming to Cal that might be interested in started our Colony, let us know.

ALUMNI UPDATES

Jack Holstein '57 and his wife currently reside in Fort Worth, Texas. John is the founder of Task Support Technology which produces computer-based training presentations and technical documentation

Bill Blackburn '60 and his wife Carol currently reside in Oakland, CA. Bill is an entrepreneur and owner of Form 3.

Jeff Erwin '76 and his wife Margaret currently live in Woodinville, WA. Jeff is a CEO coach and Executive Consultant working with small company CEO's and executive teams to help build more effective leadership methods and decision-making capabilities.

Peter Evans '79 and his wife Katherine live in Los Altos Hills, CA. Peter is the CEO and founder of New Power Technologies Incorporated. He is a professional Mechanical Engineer in California, a Chartered Financial Analyst, and serves on the Institute of Electrical and Electronics Engineers (IEEE).

Dale Hanks '83 and his wife Annette live in Pasadena, CA. Together they have three children, Rachel, 24, Eric, 22, and Sarah, 18. Dale is an investment specialist and assistant Vice President at Capital Group with over 30 years of experience in the financial services industry.

Jim Henderson '97 and his wife Alexis are living in Pleasant Hill, CA. Jim works as a materials transportation manager at Pacific Gas & Electric Company and serves as the safety chair for Supply Chain/Materials organization.

Michael Edde '98 and his wife Margot live in San Francisco, CA. Together they have two children, Henry, 3, and Josephine, a newborn. Michael, who is a Registered Professional Civil Engineer with an MBA, is the Chief Estimator at The Dutra Group.

Oliver Slosser '02 and his wife Cassandra currently live in Woodland Hills, CA with

their two children Bickleigh, 3 years old, and Cohen, 1 year old. Oliver works as the Senior Engineer at Las Virgenes Municipal Water District.

COLONY PROCESS

Colony process normally take 12-18 months to meet the requirements.

- Decide we want to return.
- Recruit an advisor team.
- Kappa Sigma to send Area Recruiter to spend a semester/year focused on recruiting the new Colony with goal of 50-60.
- Colony focuses on meeting the requirements for membership, service, written programs, educational programs, campus involvement, and raising the \$2,500 for the chartering fee.

CHAPTER CELESTIAL

Born in San Diego, CA, June 6, 1931, he returned to his Heavenly Father on March 15, 2020, free of Alzheimer's and cancer.

Gene was educated at University of California, Berkeley, on a football scholarship. He graduated from University of California, San Francisco, Dental School in 1952. As a Navy ROTC candidate, he received a direct commission as a Lieutenant on active duty. He served on the battle cruisers USS Rochester and USS St. Paul, aircraft carrier USS Midway, and at Combat Field Hospital, Da Nang, Vietnam. While stationed at Treasure Island, CA, Dr. King was personal dental officer to Fleet Admiral Chester W. Nimitz. His other duty stations were at Naval Dental Clinics in Yokosuka, Japan, Oakland Naval Hospital, California, Pearl Harbor, Hawaii, and Bethesda, Maryland.

Dr. King was a Resident Fellow at M.D. Anderson Hospital & Tumor Institute, now known as M.D. Anderson Cancer Center, while on active duty in 1968. He returned to M.D. Anderson upon his Navy retirement in 1979, later becoming Chairman of Dental Oncology and Maxillofacial Prosthodontics until 1995. He was made a Professor Emeritus, and lectured and treated patients at UT Dental School in retirement.

Dr. King was a Member of the Academy of Prosthodontics, Charter Member of the American College of Prosthodontics, and past-President

Dr. Gordon E. King, DDS, Captain, U.S. Navy '50

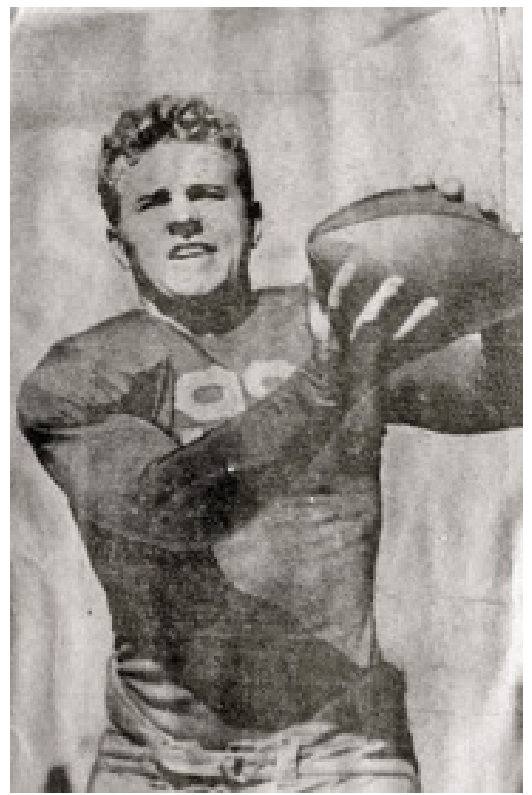


of the American Academy of Maxillofacial Prosthetics, who presented him the Ackermann Award, their highest honor. He helped create the International Academy of Maxillofacial Prosthetics and delivered the keynote speech at their first meeting in San Francisco, CA. Dr. King was a Board Member of the American Cancer Society, and Member of the American Dental Association, Texas Dental Association, and Greater Houston Dental Society.

Gene was a Deacon at the Second Baptist Church (Woodway). He led the TDOC prison ministry and MasterLife programs in Sugarland and Rosharon units for over 20 years. Gene volunteered with hospital visitations, answered calls on the Prayer Line, and loved his Sunday School Bible-study group. He was a major supporter of the Texas Baptist Children's Home and Texas Baptist Men.

Survived by his loving wife, Beatrice V. King ("Bea"), devoted son, Theodore ("Ted"), and grandson, Chet King, of Austin, TX. His interment at Houston National Veterans Cemetery on March 27, 2020, was without his family, or military honors due to COVID-19 restrictions. A memorial Celebration of Life is planned for a later date.

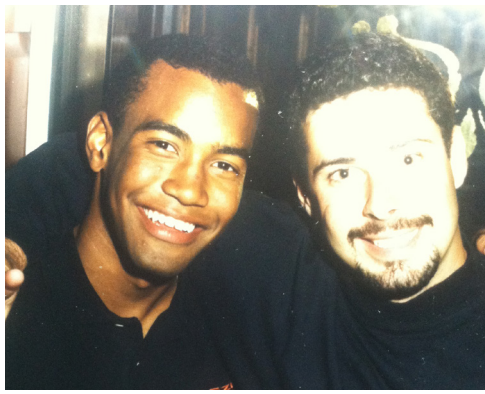
In memory of Dr. King, contributions can be made to: M.D. Anderson Cancer Center Gordon E. King, DDS Fund P.O. Box 4486 Houston, TX. 77210-4486. Or, visit <http://www.mdanderson.org/gifts>



BE

Glimpses of the Past and Present





Glimpses of the Past and Present



CAMPUS PARTNERS PROGRAM



We understand that one of the keys to our long-term success to a successful partnership with our campus. We will develop a strategy to ensure that we have a mutually beneficial partnership with the areas below. If you have a relationship with anyone in these areas, please email matt.noble@fmgtucson.com.

- Admissions & Enrollment Management
- Alumni Association
- Athletics
- Bookstore
- Campus Deans, Colleges, Programs
- Campus Police
- Campus Recreation
- Deans Office
- Disability Resources
- Development & Alumni Relations
- Diversity & Inclusion
- Facilities Management
- Food Pantry
- Housing
- Parking & Transportation
- Parent Association
- Student Engagement & Career
- Student Union



FUTURE CHAPTER & INDIVIDUAL GOALS

These goals are placeholders until the new Advisory Board & Colony is established but we just wanted to illustrate possible goals for the colony/chapter.

- Kappa Sigma Founders Award of Chapter Excellence Chapter
- CAL Chapter of Excellence Chapter
- 100% campus & chapter involvement with leading many campus club & organizations
- 100% ritual proficiency (know our history and ritual)
- 25+ hours of service and \$100+ raised per member annually
- Chapter GPA of 3.2 or higher
- Chapter of 80-100 members who are all financially current
- A house full of members who meet this minimum standard: 3.0 GPA or higher, 25 or more hours of service per year, \$100 or more raised for charity,
- involved in at least one campus organization, involved currently or in the past as a chapter officer and/or chair, financially current with the chapter, and ritually proficient
- Internships & jobs for 100% of our members
- Alumni or Parent Mentor for every member & Big Brother for pledges
- Excellence in alumni, campus, community, Kappa Sigma & parent relations
- Activities & programming for all class years
- Excellence in campus partnerships
- Educational programming: academic, alcohol & drug, career & leadership, diversity & inclusion, health & wellness, lifetime commitment, no hazing, etc.
- Top 4 in as many intramural events as possible
- Campus & Kappa Sigma reports & fees on-time
- Remain in good standing with CAL, Kappa Sigma, and the House Corporation





THE PROFILE OF THE STUDENT WE ARE LOOKING FOR

We understand that one of the keys to our long-term success is a successful partnership with our campus. We will develop a strategy to ensure that we have a mutually beneficial partnership with the areas below.

If you have a relationship with anyone in these areas, please email matt.noble@fmg-tucson.com.

- High school GPA was 3.5 or higher and/or college GPA is 3.0 or higher. They can document your commitment to service & philanthropy.
- They were involved in high school clubs and/or sports, and/or are currently involved on campus.
- They will not haze or allow themselves to be hazed.
- They want to have fun but will do so within the campus and chapter rules.
- They can afford semester membership fees.
- They are competitive and committed to chapter and individual excellence.
- They are committed to your leadership development and future career, and are interested in a career mentor.
- They are committed to lifetime involvement with our chapter.
- They respect people's differences and are committed to diversity & inclusion.
- They don't waste time feeling sorry for themselves.
- They don't give away their opportunity to lead.
- They don't focus on things they can't control.
- They don't shy away from change.
- They don't worry about pleasing everyone.
- They don't fear taking calculated risks.
- They don't dwell on the past.
- They don't make the same mistakes over and over.
- They don't resent other people's success.
- They don't give up after the first failure.
- They don't fear alone time.
- They don't feel the world owes them anything.
- They don't expect immediate results.

How You Can Support Beta-Xi

There is no better time than now to support Beta-Xi! Our chapter, like all fraternities, is as strong as the commitment of our undergraduate members focus on success, and our alumni and parent's commitment to sharing some of their time and treasure with the Chapter.

Volunteer – Join other volunteers on the Advisory Board or Housing Corporation Board. Email Whitney Skala at whitney@skala-apc.com.

Career Network – Let us know if you are willing to present on a career panel and/or serve as a career mentor to one or more undergraduates.

Recruitment Recommendations – Provide a recruitment recommendation by filling out this form: <https://www.calkappasigma.org/rush-recommendation>.

One-Time or Recurring Gift – Please consider a one-time or recurring gift. You can use the enclosed annual giving envelope or give online here: <https://www.calkappasigma.org/donate>.

Leave a Legacy – Charitable gifts help you meet your current philanthropic goals and extend your generosity well into the future. If you are interested in learning how you can leave a legacy for Beta-Xi, please read more below, as well as fill out this form: <https://www.calkappasigma.org/leave-a-legacy-interest-form>. Read more at <https://www.calkappasigma.org/leave-a-legacy>



Beta-Xi Chapter
Kappa Sigma Fraternity

c/o Fraternity Management Group
P.O. Box 12010
Tucson, AZ 85732

Address Service Requested

Prsrt Std
US Postage
PAID
Tucson, AZ
Permit #2216

**STAY
CONNECTED**



**WITH BETA-XI
CHAPTER**

Website

<https://www.calkappasigma.org>

Facebook

<https://www.facebook.com/berkeleykappasigma>

Linkedin

<https://www.linkedin.com/groups/13843358/>

Update Your Contact Information

<https://www.calkappasigma.org/alumni-profile-update>

Alumni Speaker Series Via Zoom

TO BE ANNOUNCED!